

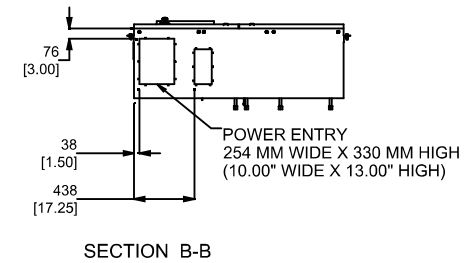
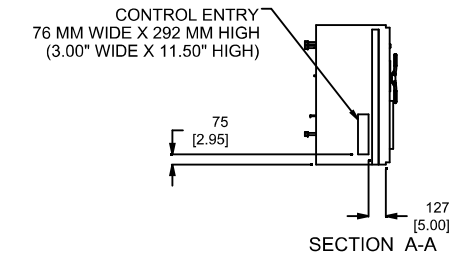
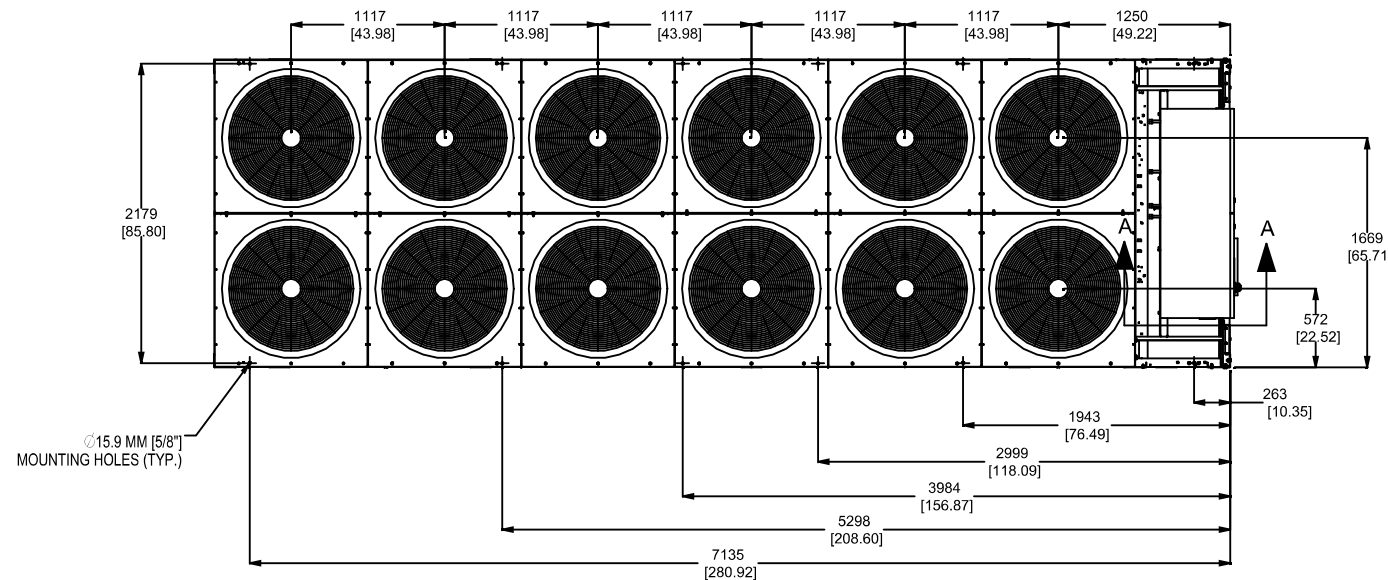
NOTES:

1. PLACEMENT ON A LEVEL SURFACE FREE OF OBSTRUCTIONS (INCLUDING SNOW, FOR WINTER OPERATION) OR AIR RECIRCULATION ENSURES RATED PERFORMANCE, RELIABLE OPERATION AND EASE OF MAINTENANCE. SITE RESTRICTIONS MAY COMPROMISE MINIMUM CLEARANCES INDICATED BELOW, RESULTING IN UNPREDICTABLE AIR FLOW PATTERNS AND POSSIBLE DIMINISHED PERFORMANCE. YORK'S UNIT CONTROLS WILL OPTIMIZE OPERATION WITHOUT NUISANCE HIGH PRESSURE SAFETY CUTOFF; HOWEVER, THE SYSTEM DESIGNER MUST CONSIDER POTENTIAL PERFORMANCE DEGRADATION. ACCESS TO THE UNIT CONTROL CENTER ASSUMES THE UNIT IS NO HIGHER THAN ON SPRING ISOLATORS. RECOMMENDED MINIMUM CLEARANCES: SIDE TO WALL - 6'; REAR TO WALL - 6'; CONTROL PANEL TO WALL - 4'; TOP - NO OBSTRUCTIONS ALLOWED; DISTANCE BETWEEN ADJACENT UNITS - 10'; NO MORE THAN ONE ADJACENT WALL MAY BE HIGHER THAN THE UNIT.
2. WEIGHT AND CENTER OF GRAVITY - REFER TO AVM REPORT.
3. WATER CONNECTIONS ARE GROOVED FOR VICTAULIC CONNECTION.
4. DIMENSIONS IN mm [INCHES].

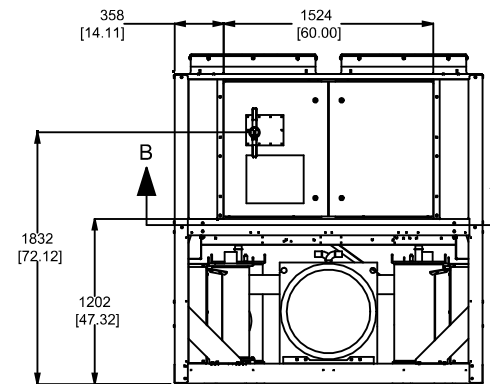
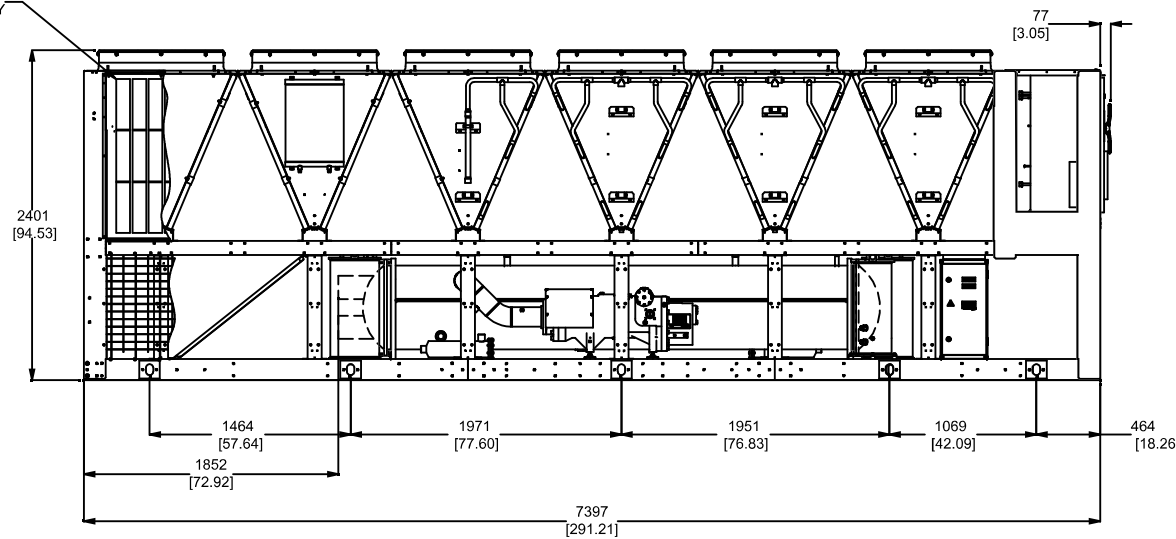
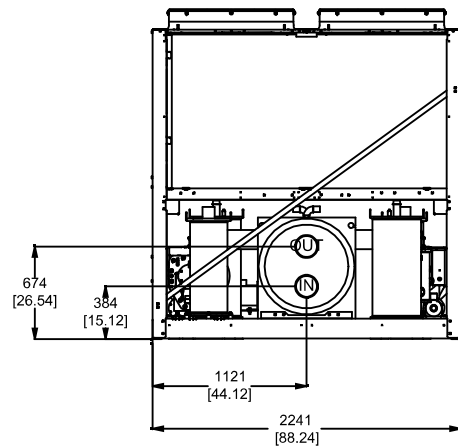
NOZZLE LEGEND

EVAPORATOR INLET LEFT END 2 PASS 6 DIA. (150Psig DWP)  
 EVAPORATOR OUTLET LEFT END 2 PASS 6 DIA. (150Psig DWP)

Victaulic Grooved Nozzles (per ANSI / AWWA C-606)



THIS UNIT IS EQUIPPED WITH WIRE GUARDS AND LOUVERS WHICH HAVE BEEN HIDDEN FOR CLARITY



**PRODUCT DRAWING**

YORK YVAA Air Cooled Screw Chiller  
 MODEL: YVAA 0233  
**NOT FOR CONSTRUCTION**

Project Name: SAM - 250T YVAA - Forrest  
 Location:  
 Engineer:  
 Contractor:  
 For:

Sold To:  
 Cust Purch Order#:  
 Contract#:  
 UNIT  
 TAG: **CH-4**

Date: December 09, 2021  
 Rev. Date: December 22, 2021  
 Form No.: 201.28-EG1  
 Dwg. Lev.: 0817  
 Dwg. Scale: NTS

